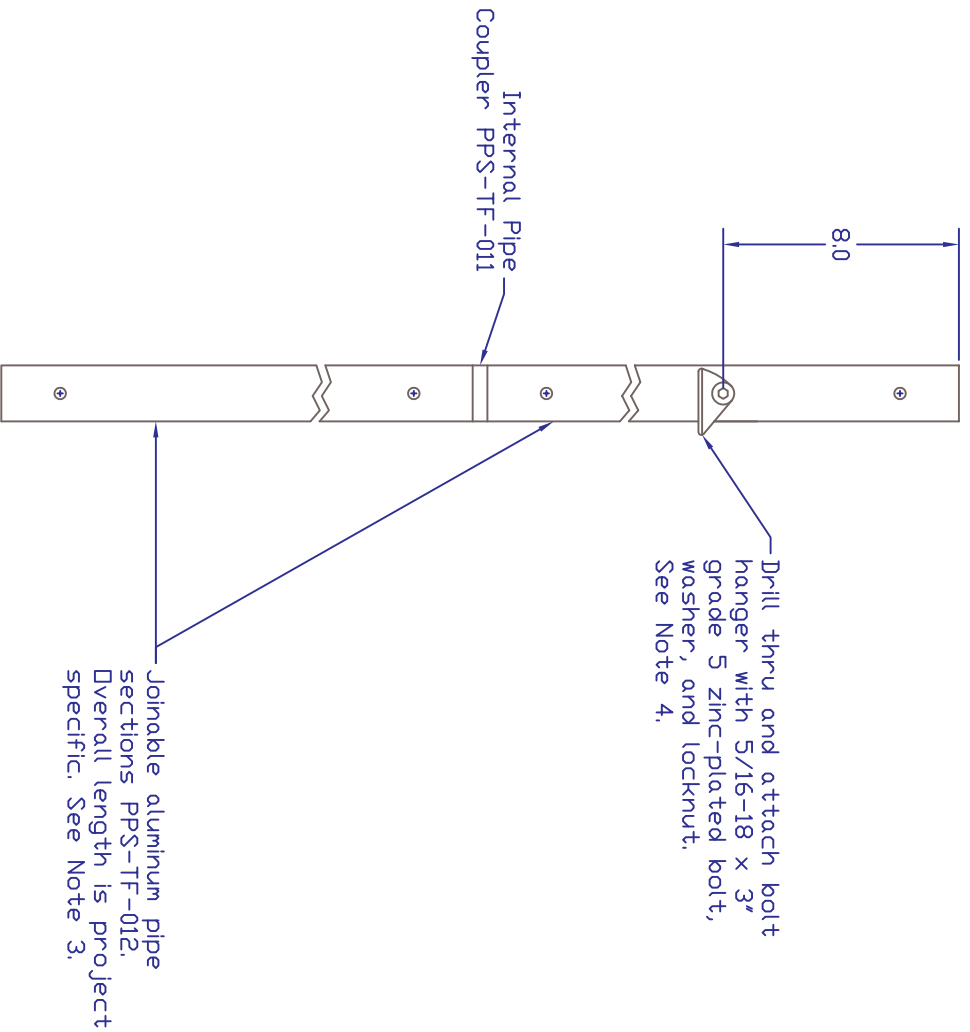
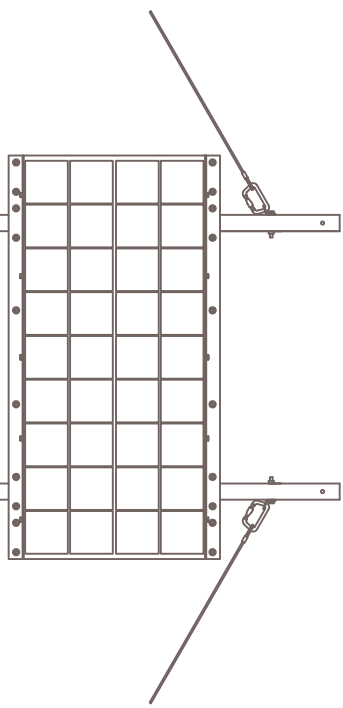


REV	Description	Date	Appr.
A	Initial Release	5/1/13	




NOTES:

1. Pipe is 1.5" sch40 aluminum structural pipe.
2. Two pipe lengths are required to hold one 80W solar panel.
3. Typical overall length is 10ft. This drawing shows two joinable aluminum pipe sections used, however a single pipe may be used if transportation allows.
4. Bolt hanger is Petzl P38150. See Assembly A. Four guy wires required per solar panel, two guy wires attached to each bolt hanger.



Assembly A

		<b>Polar Permanent GPS Station Snow Structural Frame, 2-Pole</b>	
<b>UNAVCO, Inc.</b> POLAR SERVICES 6350 Nautilus Dr., Boulder CO 80301 303-381-7500, 303-381-7451 fax		<b>Part Number</b> PPS-TF-017	<b>Rev</b> A
Drawing: <b>S. White</b> Engineering: <b>S. White</b> Approval: Date Modified: <b>May 1 2013</b>		SHEET <b>1</b> OF <b>1</b>	