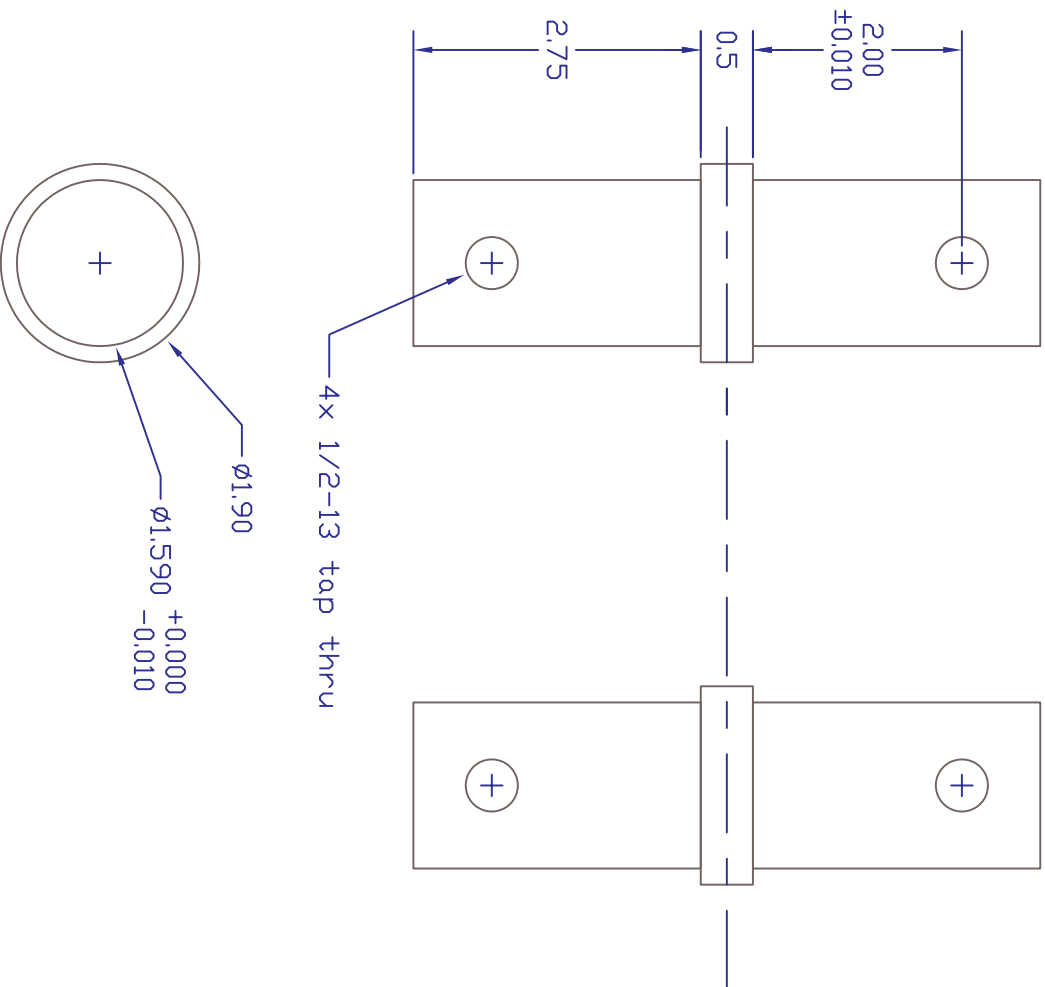



REV	Description	Date	Appr.
A	Initial Release	3/1/13	



NOTES:

1. Material: aluminum
2. Tolerances ±0.05" unless noted
3. Coupler is used to connect Joinable Aluminum Pipe Sections (PPS-TF-012)
4. Coupler secures to pipe with four 1/2-13 x 1/2" dog-point set screws with locking patch (e.g. McMaster 95235A621)

Polar Permanent GPS Station		Part Number	Rev
Aluminum Pipe Coupler: 1.5" Sch40		PPS-TF-011	A

	UNAVCO, Inc.	Drawing: S. White
	POLAR SERVICES	Engineering: S. White
	6350 Nautilus Dr., Boulder CO 80301	Approval:
	303-381-7500, 303-381-7451 fax	Date Modified: March 1 2013
		SHEET 1 OF 1