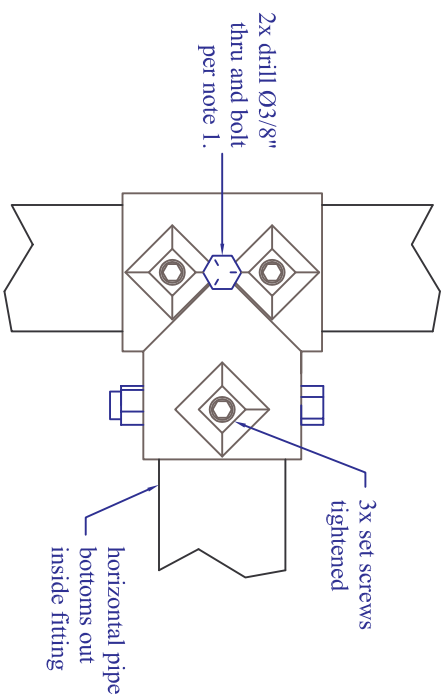
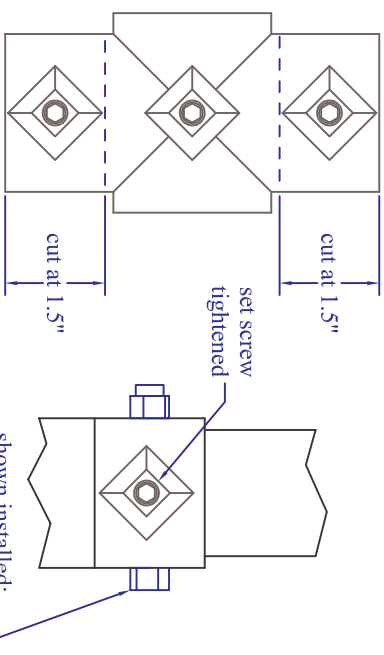


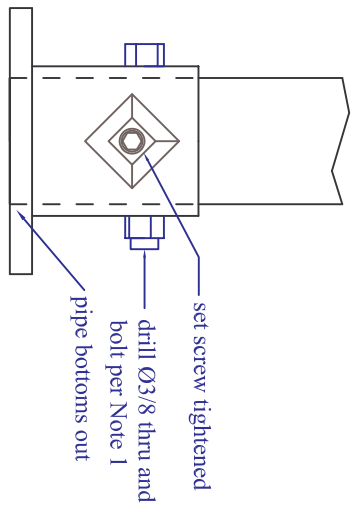
REV	Description	Date	Appr.	C	Added Bill of Materials	11/21/09	BJ
A	Initial Release	9/10/08		D	Redesign to match small frame	7/26/11	BJ
B	3 new holes, extend pipes, drill+bolt	8/21/09	BJ	E	Use internal pipe couplers. Top pipe now 50" long. Modify holes on ends of top pipes and frame legs.	5/1/13	



DETAIL A: TEE FITTING




DETAIL B: COLLAR FITTING
(2x collars cut from one cross fitting)



DETAIL C: FLANGE FOOT FITTING

- Notes:
1. Bolt through with 5/16-18 x 3" hex bolt and nylock nut.
 2. Tolerance 1/16" unless noted.
 3. See Sheet 4 for completed frame assembly and Bill of Materials.

 Polar Permanent GPS Station Snow Structural Frame, Tripod		Part Number PPS-TF-006	Rev E
UNAVCO, Inc. POLAR SERVICES 6350 Nautilus Dr., Boulder CO 80301 303-381-7500, 303-381-7451 fax		Drawing: S. White Engineering: S. White Approval:	Date Modified: May 1 2013 SHEET 3 OF 4