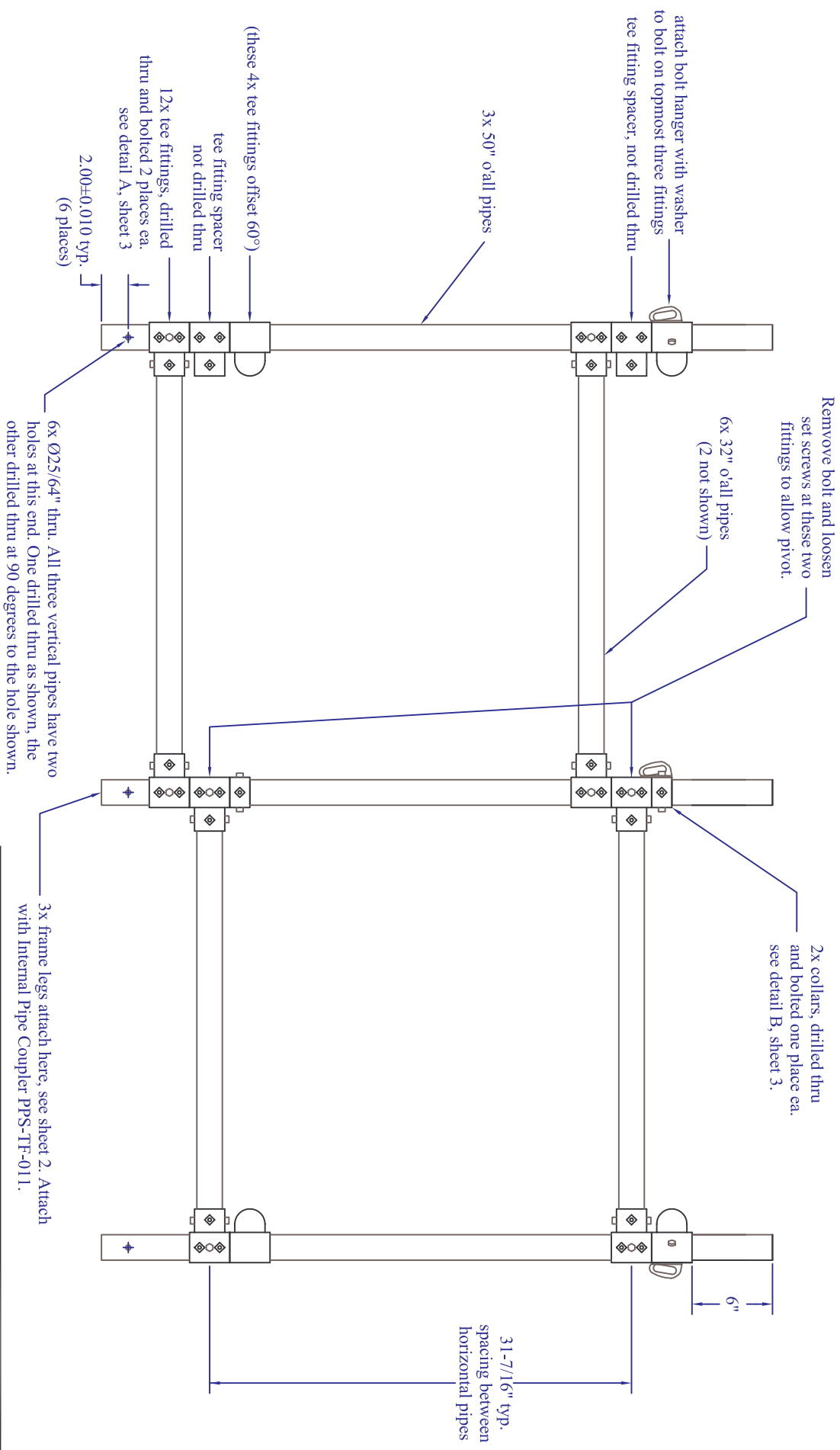



REV	Description	Date	Appr.	C	Added Bill of Materials	11/21/09	BJ
A	Initial Release	9/10/08		D	Redesign to match small frame	7/26/11	BJ
B	3 new holes, extend pipes, drill+bolt	8/21/09	BJ	E	Use internal pipe couplers. Top pipe now 50" long. Modify holes on ends of top pipes and frame legs.	5/1/13	



- Notes:
1. Tolerance 1/16" unless noted.
  2. All pipe ends deburred.
  3. Frame is shown partially disassembled.
  4. See Sheet 4 for completed frame assembly and Bill of Materials.

 <b>UNAVCO, Inc.</b> POLAR SERVICES 6350 Nautilus Dr., Boulder CO 80301 303-381-7500, 303-381-7451 fax		<b>Polar Permanent GPS Station          Snow Structural Frame, Tripod</b>	<b>Part Number</b> PPS-TF-006	<b>Rev</b> E
Drawing: <b>S. White</b> Engineering: <b>S. White</b> Approval:		Date Modified: <b>May 1 2013</b> SHEET <b>1</b> OF <b>4</b>		