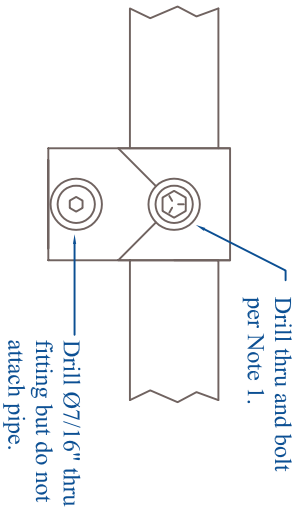
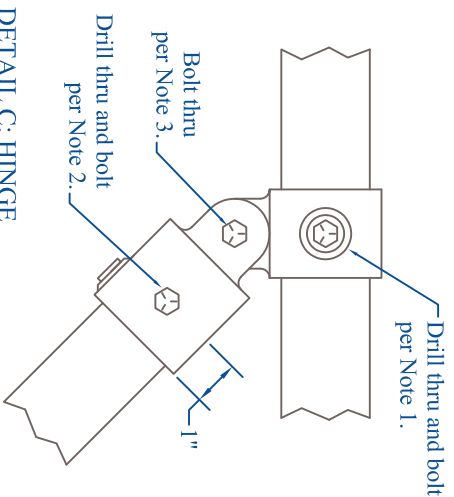


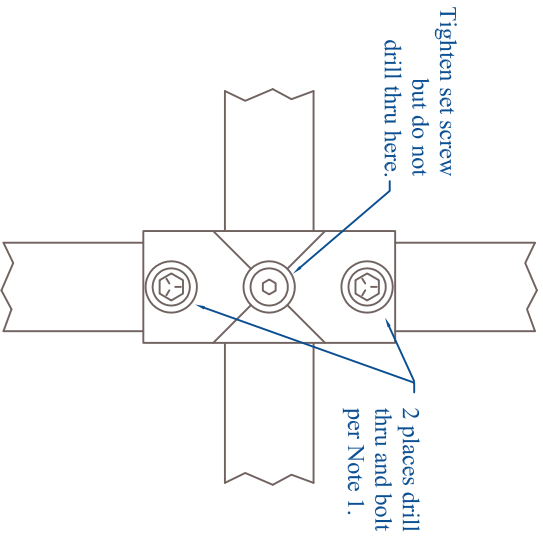
DETAIL A: TEE



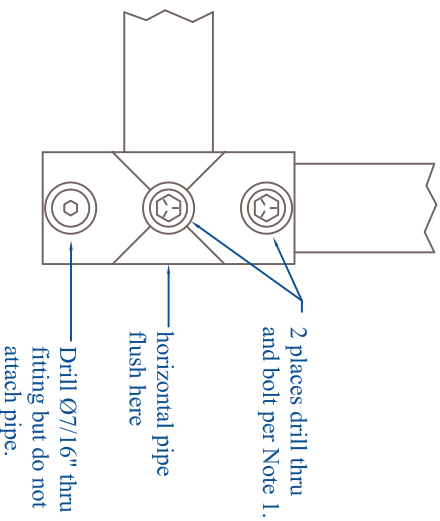
DETAIL B: LEVELING FOOT TEE



DETAIL C: HINGE



DETAIL D: TOP CROSS




DETAIL E: BOTTOM CROSS

NOTES:

1. To assemble:
 - A. Insert pipes until bottom-out
 - B. Drill Ø7/16" thru fitting and pipe, concentric with set screw.
 - C. Tighten set screw.
 - D. Bolt thru with 5/16-18 x 3" hex bolt and nylock nut.
2. To assemble:
 - A. Insert pipe until bottom-out.
 - B. Tighten set screw
 - C. Drill Ø7/16" thru fitting and pipe at 90° to set screw
 - D. Bolt thru with 5/16-18 x 3" hex bolt and nylock nut.
3. Bolt thru with 3/8-16 x 1.25" hex head bolt and nylock nut. Insert thin 3/8" washers as necessary to take up axial clearance between hinge members.
4. Wherever possible, orient fittings such that set screws face outward from center of frame, and ground-level fittings have set screws facing upward.
5. See Sheet 4 for Bill of Materials and disassembly of frame for shipping.

REV	Description	Date	Appr.
A	Initial Release	4/20/07	
B	Added Disassembly (Sheet 4)	5/2/07	
C	Added leveling foot tees, top crosses. Changed fitting assembly details.	5/30/07	
D	Top member lowered 1". Six 3/8" holes added. Leveling foot tee moved 0.5". Add'l disassembly view.	8/7/07	
E	Added 14" vertical pipe to top member.	12/27/07	BJ
F	New fittings and dimensions. Removed top center pipe.	2/2/09	BJ
G	Add Bill of Materials	11/21/09	BJ



Polar Permanent GPS Station
Margin Structural Frame, Large

UNAVCO, Inc.
POLAR SERVICES
6350 Nautilus Dr., Boulder CO 80301
303-381-7500, 303-381-7451 fax

Part Number	Rev
PPS-TF-001	G

Drawing:	S. White
Engineer/fg:	S. White
Approv/ck:	B. Johns
Date Modified:	Nov 21 2009
SHEET	2 OF 4