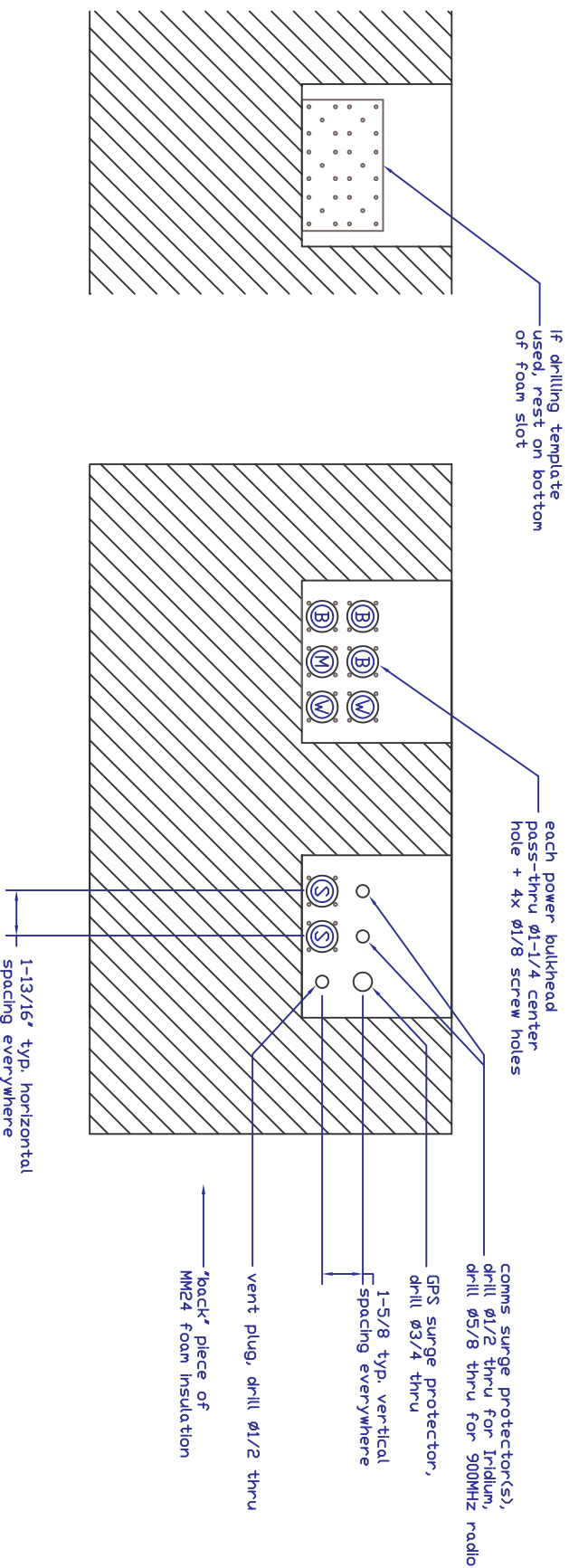



REV	Description	Date	Appr.
A	Initial Release	5/23/08	
B	TNC and vent switched places, thru holes for RF bulkheads.	4/20/09	BJ
C	Add GPS + comms surge protectors, connector layout changed	5/16/13	



Connector thru-hole drilling details
(view from inside MM36 enclosure)

- NOTES:
1. See Sheet 2 for connector placement (external view)
 2. All connectors mounted from the outside of enclosure
 3. Power bulkhead pass-thru connectors are mounted with pins facing outward, and key oriented upward
 4. Use PEI Genesis nut plates and 4-40 x 1/2" socket-head cap screws to attach power bulkhead pass-thru connectors
 5. Ground plate: UNAVCO P/N PPS-EN-012
 6. Connector drilling template: UNAVCO P/N PPS-EN-004

 Polar Permanent GPS Station MM36 Enclosure Connector Layout		Part Number PPS-EN-010	Rev C
UNAVCO, Inc. POLAR SERVICES 6350 Nautilus Dr., Boulder CO 80301 303-381-7500, 303-381-7451 fax		Drawing: S. White Engineering: S. White Approval: Date Modified: May 16 2013 SHEET 2 OF 2	