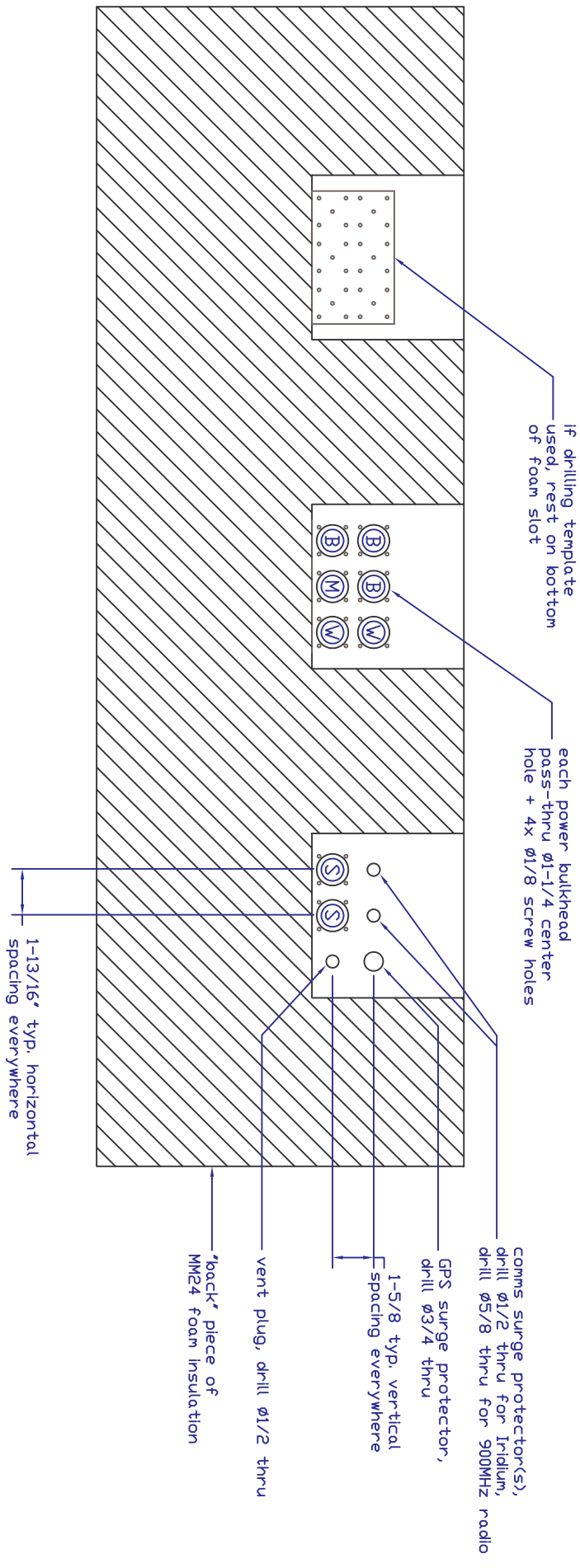



| REV | Description | Date | Appr. |
|-----|--|---------|-------|
| A | Initial Release | 4/25/08 | |
| B | TNC and vent switched places, thru holes for RF bulkheads. | 4/20/09 | BJ |
| C | Add GPS + comms surge protectors, connector layout changed | 5/16/13 | |



Connector thru-hole drilling details
(view from inside MM24 enclosure)

NOTES:

1. See Sheet 2 for connector placement (external view)
2. All connectors mounted from the outside of enclosure.
3. Power bulkhead pass-thru connectors are mounted with pins facing outward, and key oriented upward
4. Use PEI Genesis nut plates and 4-40 x 1/2" socket-head cap screws to attach power bulkhead pass-thru connectors
5. Ground plate: UNAVCO P/N PPS-EN-012
6. Connector drilling template: UNAVCO P/N PPS-EN-004

| | | | |
|---|--|--|-----------------|
|  Polar Permanent GPS Station MM24 Enclosure Connector Layout | | Part Number PPS-EN-009 | Rev C |
| UNAVCO, Inc. POLAR SERVICES 6350 Nautilus Dr., Boulder CO 80301 303-381-7500, 303-381-7451 fax | | Drawing: S. White Engineering: S. White Approval: Date Modified: May 16 2013 SHEET 2 OF 2 | |