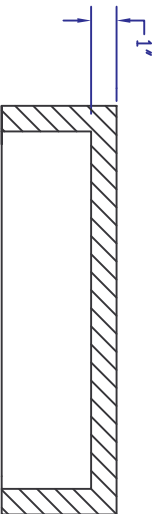
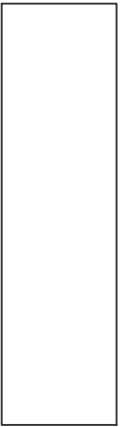
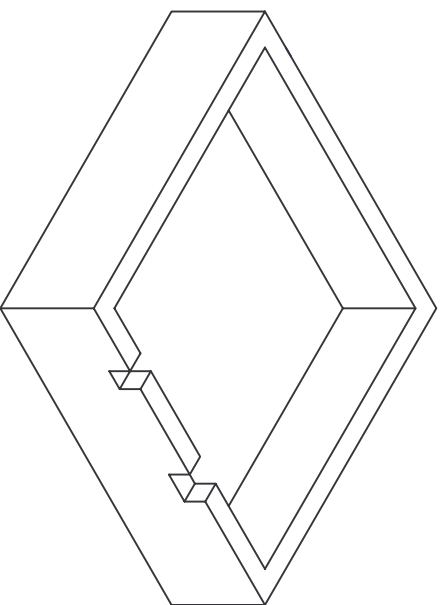
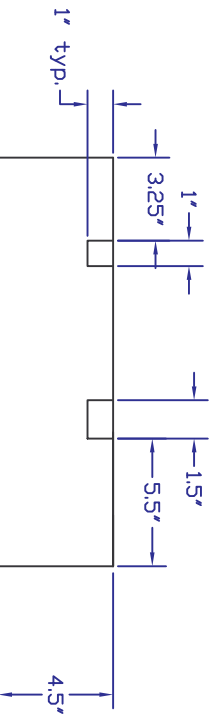
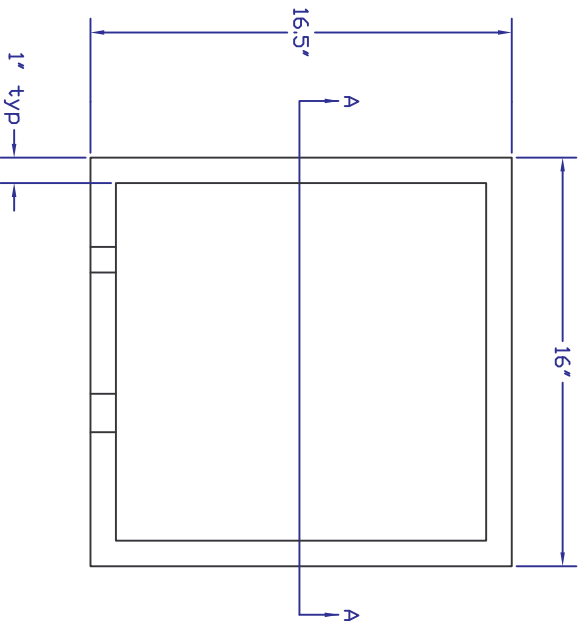


REV	Description	Date	Appr.
A	Initial Release	10/3/07	
B	Modified cutout dimensions	4/2/08	
C	Modified cutouts	5/13/09	BJ
D	All sides now 1" thick (were 1.5")	5/14/13	



Section A-A



- Notes:
1. Material is Dow Styrofoam 'Blueboard' or equivalent (insulation value R5 per inch or better).
  2. Part can be fabricated by gluing together several smaller pieces.
  3. Tolerances  $\pm 1/8"$

**Polar Permanent GPS Station  
Electronics Foam Housing**

<b>Part Number</b>	<b>Rev</b>
PPS-EN-006	D

UNAVCO, Inc.

POLAR SERVICES

6350 Nautilus Dr., Boulder CO 80301  
303-381-7500, 303-381-7451 fax

Drawing:	S. White
Engineering:	S. White
Approvat:	
Date Modified:	May 14 2013
SHEET	1 OF 1

