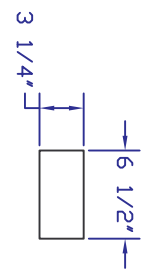
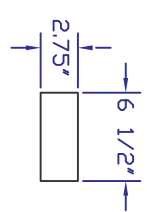
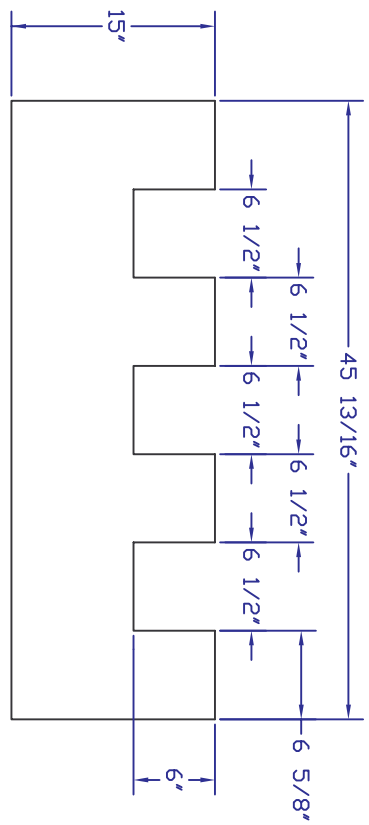
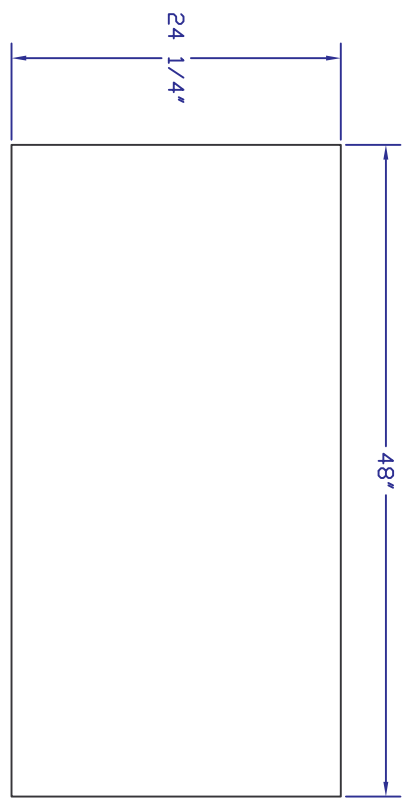
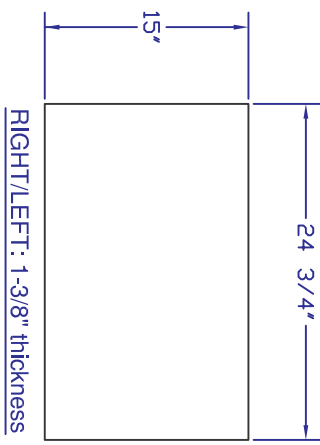



| REV | Description | Date | Appr. |
|-----|--|---------|-------|
| A | Initial Release | 8/3/07 | |
| B | Front/Back o'all length 45 9/16" Right/Left thickness 1.5" | 8/14/07 | |
| C | Added third cutout on Back piece | 9/12/07 | |
| D | Back pieces 2" thick. Right/Left pieces 1-3/8" thick. Front/Back 45-13/16" wide. | 3/20/08 | BJ |
| E | Bottom 1/2" thinner, sides 1/2" taller | 7/21/11 | BJ |



NOTES:

1. Material is Dow Styrofoam "Blueboard" or equivalent (insulation value R5 per inch or better).
2. Pieces can be single layers or built up from several thin layers.
3. Tolerances $\pm 1/8"$
4. Complete set consists of:
 - Top #1: 1x Top #2: 1x
 - Bottom: 1x Front: 1x
 - Back: 1x Right/Left: 2x
 - Back Insert #1: 3x Back Insert #2: 3x
5. Back Inserts made of material removed from Back pieces.
6. See sheet 1 for remaining pieces.

| | | | |
|--|--|---|------------------------|
|  Polar Permanent GPS Station MM24 Enclosure Foam Insulation | | UNAVCO, Inc. | |
| | | POLAR SERVICES | |
| 6350 Nautilus Dr., Boulder CO 80301 303-381-7500, 303-381-7451 fax | | Part Number PPS-EN-005 | Rev E |
| Drawing: S. White Engineering: S. White Approval: B. Johns Date Modified: July 21 2011 | | SHEET 2 OF 2 | |