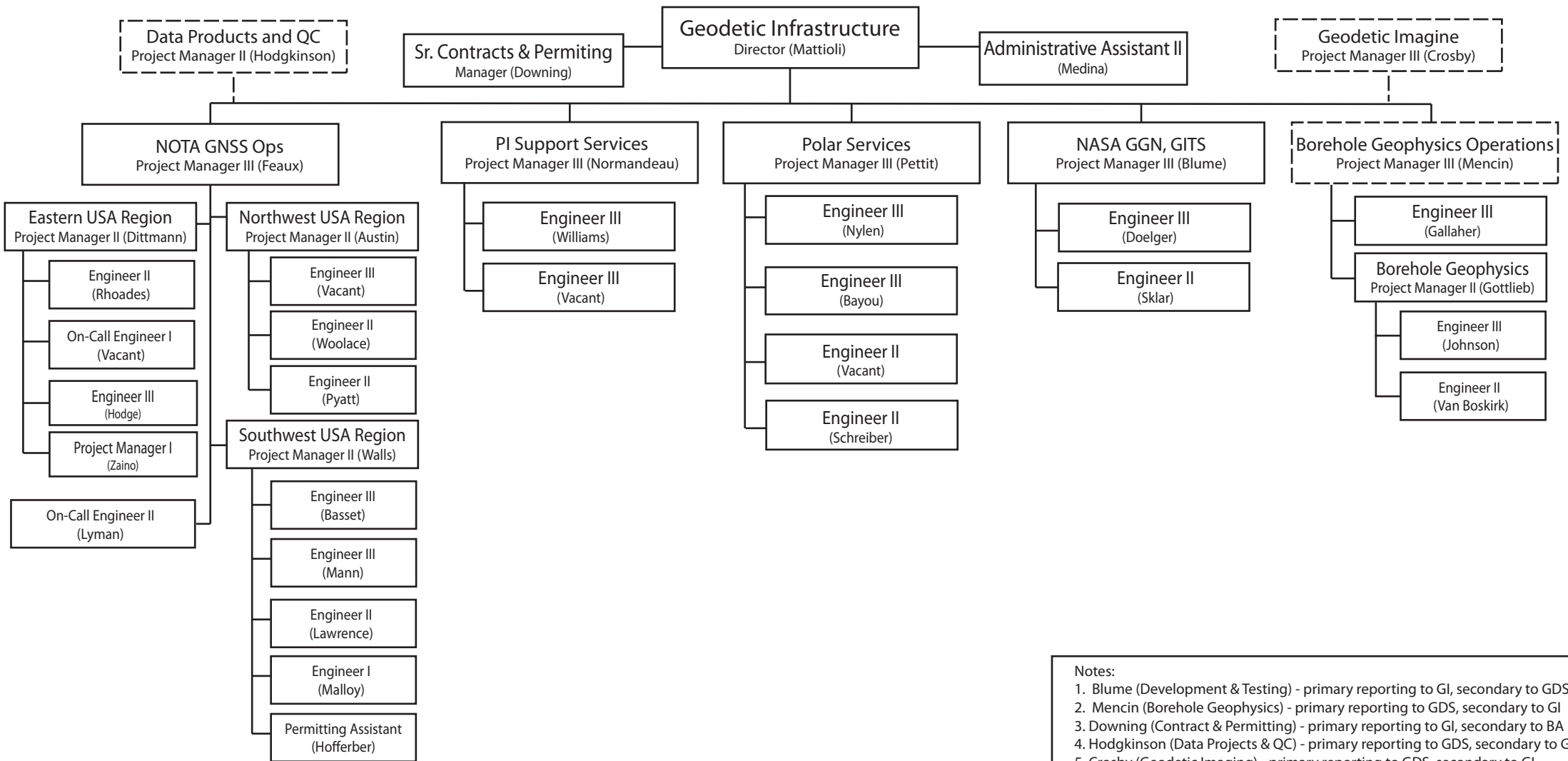


UNAVCO Geodetic Infrastructure Organization Chart



Notes:

1. Blume (Development & Testing) - primary reporting to GI, secondary to GDS
2. Mencin (Borehole Geophysics) - primary reporting to GDS, secondary to GI
3. Downing (Contract & Permitting) - primary reporting to GI, secondary to BA
4. Hodgkinson (Data Projects & QC) - primary reporting to GDS, secondary to GI
5. Crosby (Geodetic Imaging) - primary reporting to GDS, secondary to GI